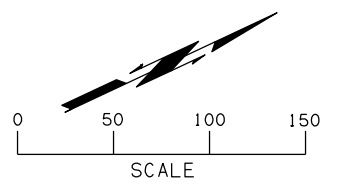


FED. ROAD DIST. NO.	STATE	JOB PIECE NO.	FISCAL YEAR	SHEET NO.	TOTAL SHEETS
6	OKLA.	27050(04)	2017		

DESCRIPTION	REVISIONS	DATE



STA. A 73+16.6 201.50 RT. I-44
 C.D.I. 25'X25'x16"
 TOP OF GRATE: I-4314
 E. ELEV. = 1137.28
 E. 18" RCP (SOUTH) = 1137.28
 E. 18" RCP (WEST) = 1137.32

STA. A 73+25 276 RT. I-44
 7'X6'69" LONG COMP. S.D. (UP, RRJ)
 E. ELEV. = 1117.47 NEAR & 1117.42 FAR

STA. A 73+37 424 RT. I-44
 7'X6'12" LONG COMP. S.D. (SWC, RRJ)
 E. ELEV. = 1117.32 NEAR & 1116.40 FAR

STA. A 74+95.99 138.50 LT. I-44
 12" RCP
 E. 12" RCP = 1126.45

STA. 75+49.06 94.95 LT.
 4'X4'23" RCP S.D.
 E. ELEV. = 1124.52 LT. & 1123.21 RT.

STA. 75+53.13 144
 4'X3'23.14" RCP S.D. 98.95 LT. & 132.39 RT.
 E. ELEV. = 1124.52 LT. & 1123.21 RT.

STA. 79+67.74 168.28 LT. I-44
 12" X36.56" RCP S.D.
 E. ELEV. = 1134.98

STA. 79+34.36 180.45 LT. I-44
 12" X34.68" RCP S.D.
 E. ELEV. = 1135.53

STA. 79+38.81 139.26 LT. I-44
 12" X36.56" RCP S.D.
 E. ELEV. = 1133.87

STA. 79+55.32 152.83 LT. I-44
 12" X34.68" RCP S.D.
 E. ELEV. = 1134.89

STA. 80+98.56 235.38 LT. I-44
 2 - 15'X50" RCP S.D.
 E. ELEV. = 1133.72 NEAR & 1133.04 FAR

Sta. 81+00.04 67.87 LT. I-44
 2 - 15'X37" RCP S.D.
 E. ELEV. = 1130.65 NEAR & 1131.14 FAR

BM#43 CHISELED SQUARE
 S.E. COR. S. HDWL
 STA. 396+43, 27' RT.
 EL. 1134.97

BM#44 2" ALUM. CAP
 END OF OVERPASS I-44
 EL. 1144.60

BM#45 TOP OF STEM. H.A.R.N. MON.
 "TWO" & ODOT MON. NO. C-16-1081
 = BM#3 SWO 3748(1) I-44
 STA. 70+72, 192' LT.
 EL. 1140.31

SEE SHEET
 46 FOR RAMP F
 PROFILE

SEE SHEETS
 26 - 33 FOR
 GEOMETRIC DATA

SEE SHEETS
 65 - 69 FOR
 PAVEMENT DETAILS

LEGEND

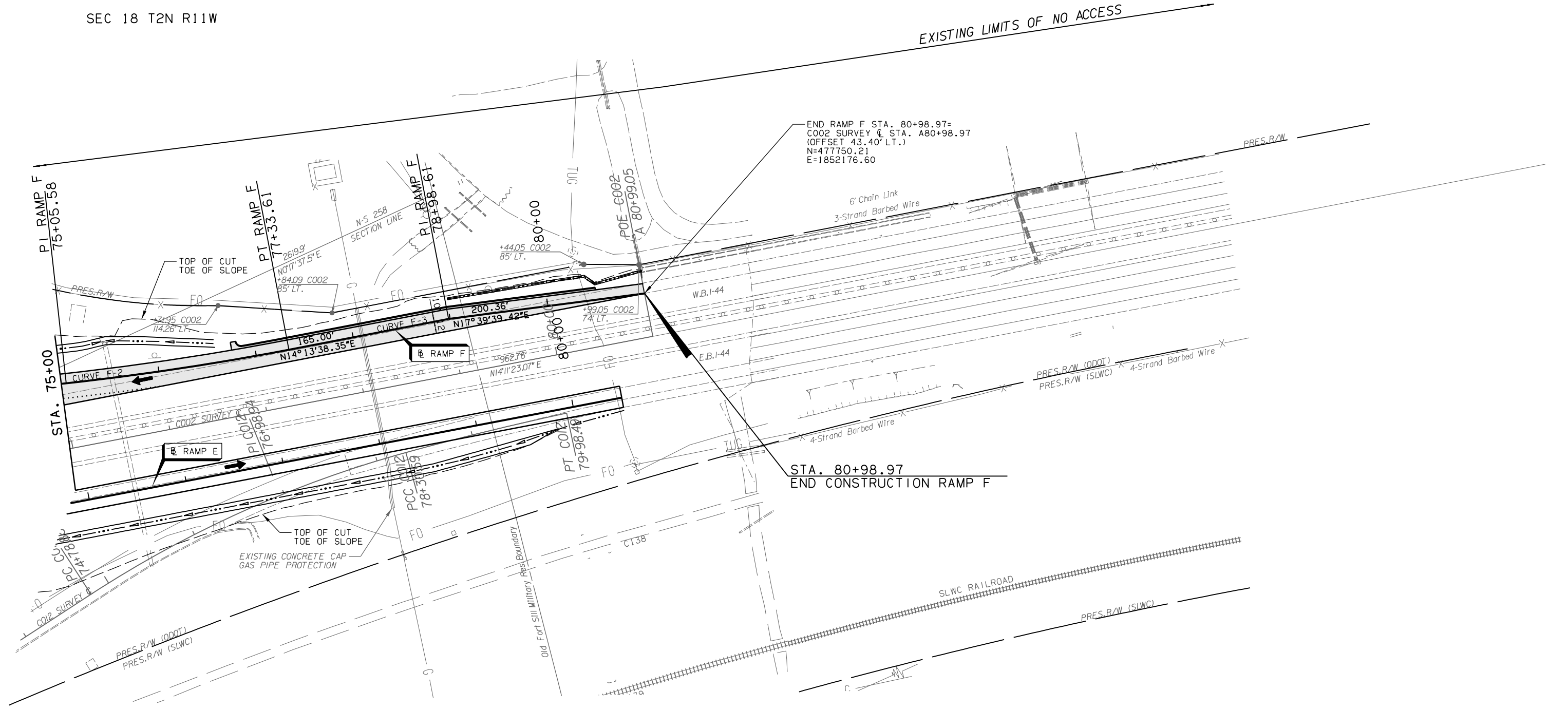
■ PROPOSED PAVEMENT

⊕ DRAINAGE STRUCTURE

FT. SILL U.S. MILITARY RES.

SEC 18 T2N R11W

EXISTING LIMITS OF NO ACCESS



SEC 17 T2N R11W

RAMP F

DESIGN	AKS	6/12	1-44 & US-62 INTERCHANGE
DRAWN	BWH	6/12	
CHECKED	JES	5/16	
APPROVED			
SQUAD	GARVER		

STATE JOB NO. 27050(04) SHEET NO. 40

PLAN SHEET (SHEET 7 OF 7)